

Chrysler Crossfire Retractable Trunk Cover



ZCR58908 – JEMIMA BLACK



ZCR59008 – JEMIMA GREY

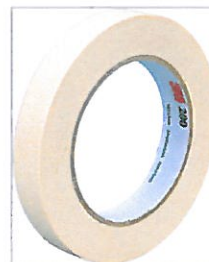
Kit Contents: -

- 1. off Retractable Cover
- 3. off Hex Washer Head Screw (Kit 1)
(6.3mm x 32mm)
- 1. off 4.5mm Drill (Kit 1)
- 1. off 6mm Drill (Kit 2)
- 1. off 3mm Allen Key (Kit 2)
- 4. off M4 x 16mm Cap Screw (Kit 2)
- 4. off M4 Washer (Kit 2)
- 4. off M4 Spring Washer (Kit 2)



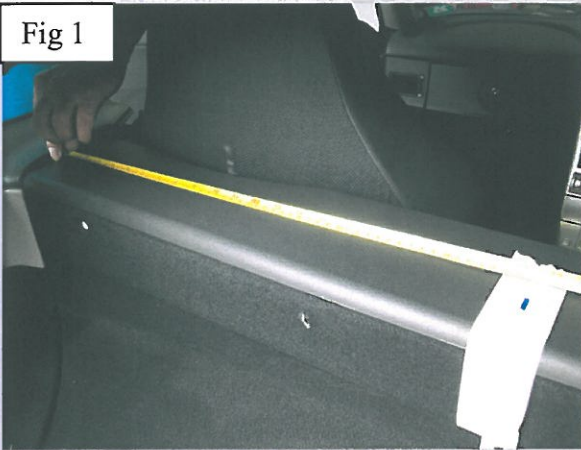
Tools Required: -

- 8mm Socket
- Electric Drill
- Masking Tape
- Pencil
- Tape Measure



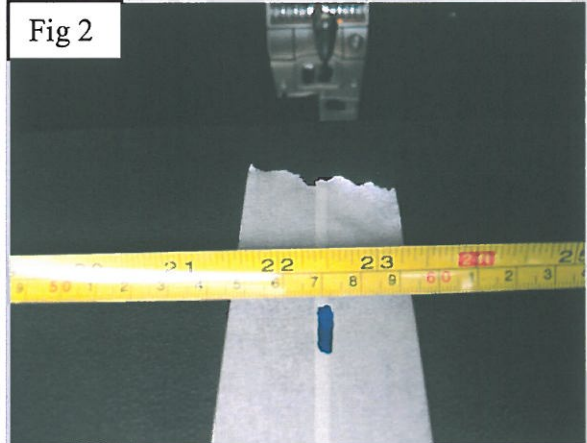
Installation Instructions

Fig 1



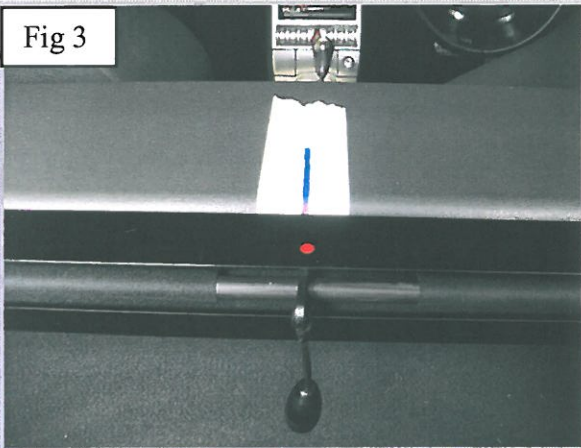
Measure 570mm from the edge of the cowl to the centre of the bulkhead the apply masking.

Fig 2



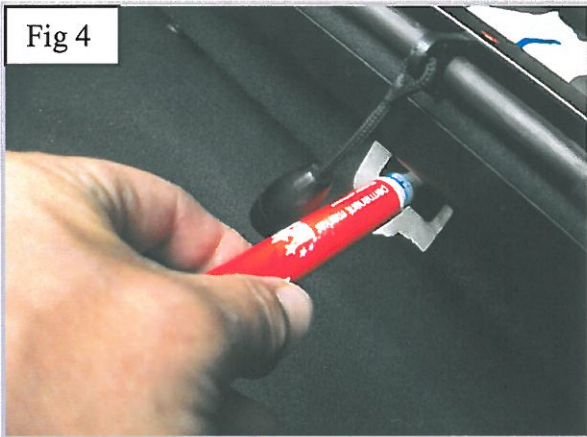
Using a pencil Mark a line 570mm from the edge of the bulkhead to the centre of the bulkhead.

Fig 3



Hold trunk cover level in position with the bulkhead and align the red dot with marked position on the masking tape.

Fig 4



Once in position mark through the centre bracket hole to give you your 1st drilling position.

Fig 5



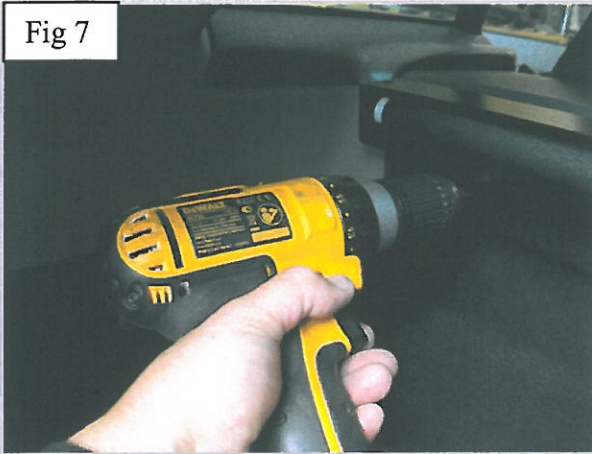
Remove trunk cover then drill marked hole position using the 4.5mm drill provided in kit No 1.

Fig 6



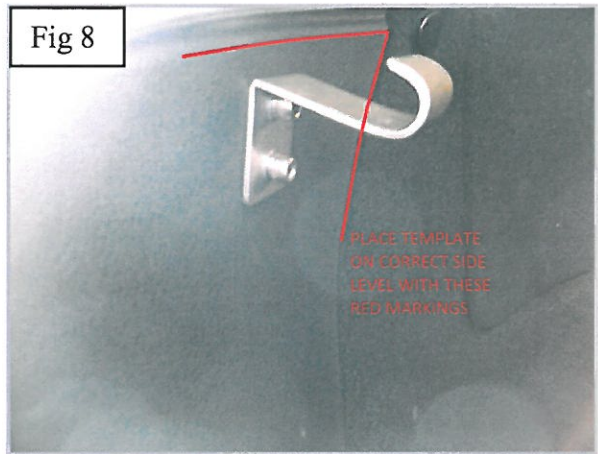
Reposition trunk cover then fasten to bulkhead using the Hex Head Washer Screw provided in kit No 1.

Fig 7



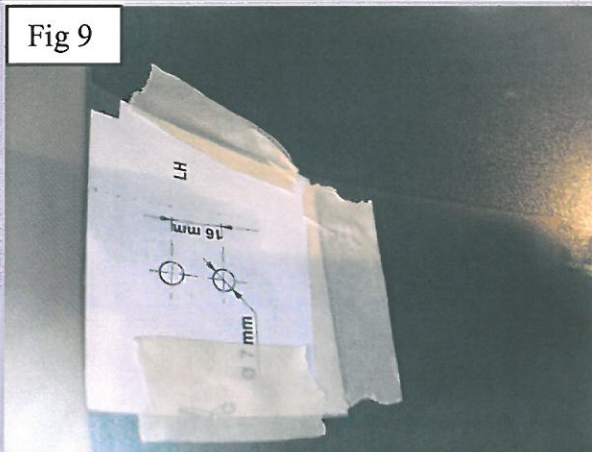
Make sure trunk cover is level with cowling then drill the one remaining bracket at each end of the trunk cover then fasten to bulkhead using Hex Head Washer Screw provided in kit No 1. (Fig 6)

Fig 8



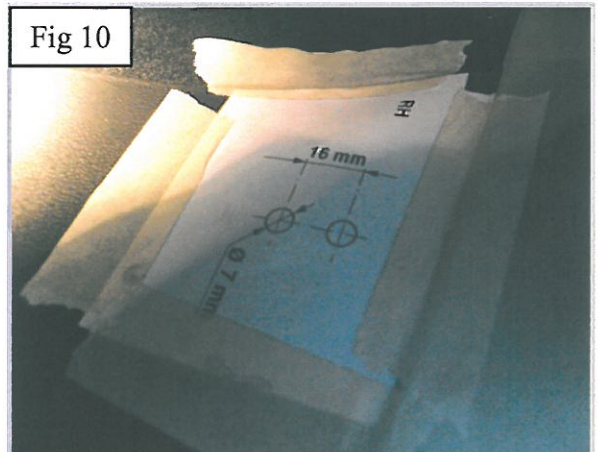
Place template in this position. (Please make sure you use the correct template on the correct side).

Fig 9



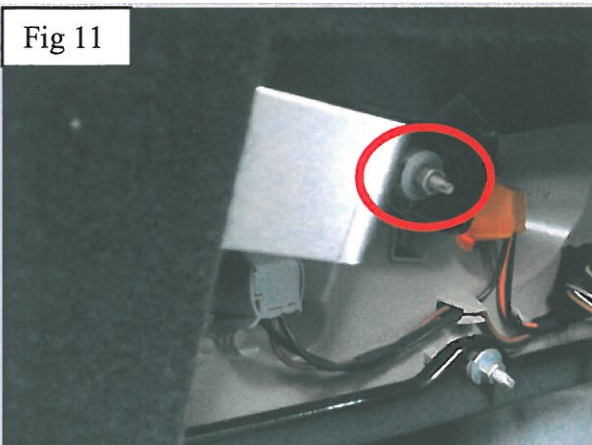
Hold template in place using masking tape and the drill the two 6mm holes as on the template using the 6mm drill in kit 2.

Fig 10



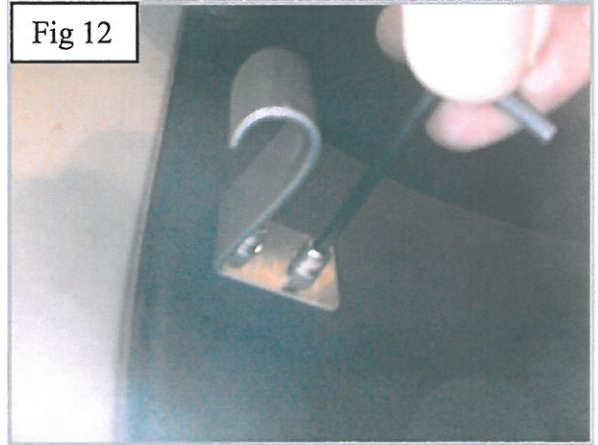
Repeat as fig 9 but on opposite side using opposite template.

Fig 11



Remove cover and remove the nut from and attach the large bracket then reattach the nut. (Do not fully tighten at this stage).

Fig 12



Attach the hook bracket to the large bracket using the allen key tighten the cap screws & washers provide in kit 2. Fully tighten all fixings

